

More  
clarity



Simulated images. Development Time approx. 90 sec.

More  
style



More  
compact



More  
night &  
day



Now  
even more  
ways to give.™

**instax mini 11™**  
don't just take, give.™

\*As compared to the INSTAX MINI 9 Instant Camera

More  
simple  
selfies





BLUSH PINK



ICE WHITE



SKY BLUE



LILAC PURPLE



CHARCOAL GRAY

# instax mini 11™ Instant Camera

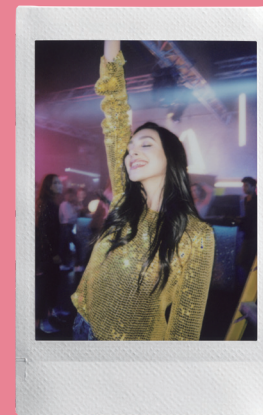


## Now It's Easy to Get Bright Photos Anywhere!

The high-performance flash automatically calculates surrounding brightness and adjusts shutter speed accordingly — no need for any special settings.

### Other INSTAX MINI Cameras

The light of the flash may not always reach the background, sometimes resulting in a darker-looking photo.



Brighter  
Backgrounds

### INSTAX MINI 11

MINI 11 captures bright backgrounds and bright subjects even in dark scenes.





# Selfies & Close-Ups Never Looked Better!

Simply pull out the lens to instantly switch to Selfie Mode!



1

When you see the "SELFIE ON" mark, it's on Selfie Mode!



2



## Capture a Perfect Close-Up!

Use Selfie Mode to shoot a subject 30 to 50cm away so you can get a clear close-up shot everytime.

Close-up range  
30 to 50cm



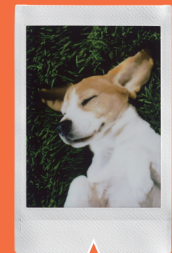
There's a slight shift between the viewfinder and the actual photo during close-ups. Here's a tip: Aim just a little to the right of your subject for best results.



You can check your framing with the mirror next to the lens.



Area seen in viewfinder



Actual photo

The INSTAX prints depicted are simulated images.

# instax mini™

Instant Film

There are so many film border designs to choose from! (Sold separately)

**WHITE FRAME TWIN PACK**  
20 exposures



**BLUE MARBLE**  
10 exposures



## Accessories (sold separately)

### Camera Cases



### Albums



[instaxus.com](http://instaxus.com)



INSTAX MINI 11  
special website

## INSTAX MINI 11 Specifications

Film	FUJIFILM INSTAX MINI instant film (sold separately)
Photo Picture Size	62 mm x 46 mm / 2.44 in. x 1.81 in.
Lens	2 components, 2 elements, f = 60 mm, 1:12.7
Viewfinder	Real image finder, 0.37x, with target spot
Shooting Range	0.3 m (0.99 ft) and beyond (use selfie mode for 0.3 m to 0.5 m (0.99 ft to 1.64 ft))
Shutter	Programmed electronic shutter 1/2 to 1/250 sec. Slow synchro for low light
Exposure Control	Automatic, Lv 5.0 to 14.5 (ISO 800)
Film Ejection	Automatic
Film Developing Time	Approx. 90 seconds (varies depending on the ambient temperature)
Flash	Constant firing flash (automatic light adjustment), recycle time: 6.5 seconds or less (when using new batteries), effective flash range: 0.3 to 2.7 m / 0.98 ft to 8.86 ft
Power Supply	Two AA-size alkaline batteries (LR6), capacity: approx. 10 INSTAX MINI film packs of 10 exposures each
Auto Power Off Time	After 5 minutes
Other	Includes film counter and film pack confirmation window
Dimensions	107.6 mm x 121.2 mm x 67.3 mm / 4.24 in. x 4.77 in. x 2.65 in.
Weight	293 g / 0.65 lbs (without batteries, strap and film)

- All INSTAX prints depicted are simulated images.
- Specifications are subject to change without notice.
- Due to the nature of the catalog's printing, colors may appear slightly different from the actual products.

SAP Material Code	16654774	16654786	16654798	16654803	16654762
Description	INSTAX MINI 11 BLUSH PINK TH EX D US	INSTAX MINI 11 CHARCOAL GRAY TH EX D US	INSTAX MINI 11 ICE WHITE TH EX D US	INSTAX MINI 11 LILAC PURPLE TH EX D US	INSTAX MINI 11 SKY BLUE TH EX D US
Unit UPC Code	074101202342	074101202304	074101202298	074101202236	074101202441
Unit Dims (LxWxH)	4.69" x 2.95" x 6.18"	4.69" x 2.95" x 6.18"	4.69" x 2.95" x 6.18"	4.69" x 2.95" x 6.18"	4.69" x 2.95" x 6.18"
Unit Weight	1.2 lbs	1.2 lbs	1.2 lbs	1.2 lbs	1.2 lbs
Case UPC Code	10074101202349	10074101202301	10074101202295	10074101202233	10074101202448
Case Dims (LxWxH)	15.55" x 9.84" x 7.8"	15.55" x 9.84" x 7.8"	15.55" x 9.84" x 7.8"	15.55" x 9.84" x 7.8"	15.55" x 9.84" x 7.8"
Case Weight	10.93 lbs	10.93 lbs	10.93 lbs	10.93 lbs	10.93 lbs
Min. Order Qty.	10	10	10	10	10